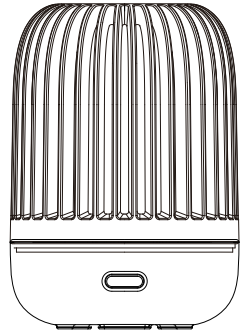


GIO-195WHITE

innoGIO



GIOhygro Aroma Diffuser with LED backlight

INSTRUCTION MANUAL

Manual Version: V1.0.

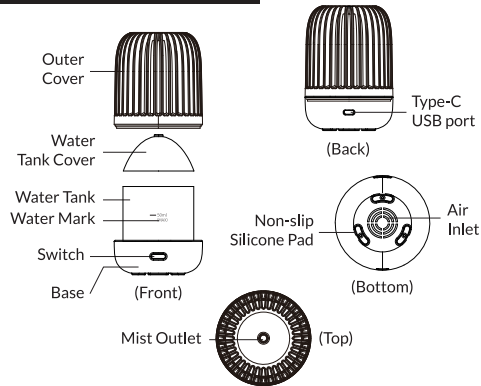
Date of Issue: 2022/08

BASIC INFORMATION

Item name: **GIOhygro Aroma Diffuser with LED backlight**
Spray volume: 8 mL-12 mL/h
Input Voltage/Current: 5V-1000mA

Item No.: GIO-195 WHITE
Item Size: 82 x 82 x 119 mm
Material: PP, Power: 4 W
Water Tank Capacity: 50 mL

INSTRUCTION MANUAL



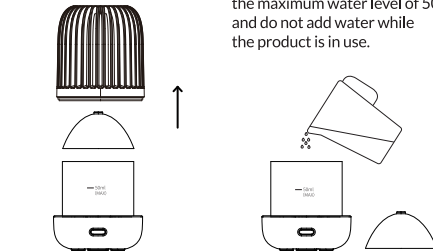
PRODUCT FEATURES

1. This product has built-in lights that create a colourful and cosy atmosphere.
2. Ultrasonic vibrations vaporise water which increases air humidity.
3. Add water-soluble essential oils to the water and enjoy aromatherapy.

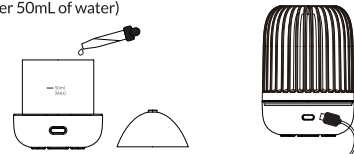
INSTRUCTIONS FOR USE

1. This product is an aroma diffuser. The input voltage/current is 5V-2000mA.
2. Before use, place the product on a stable and flat surface, then plug in the USB cable to the product, plug the other end to the power source. The product is now ready for use.
3. Do not use a fast charging adapter over 5V-2000mA to supply power.
4. Symbols used in this manual:

- 1) Open the outer cover and water tank cover.
- 2) Add water to the water tank (do not use hot water); do not exceed the maximum water level of 50mL, and do not add water while the product is in use.



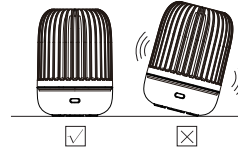
- 3) After filling the tank with water, add essential oil. (It is recommended to use 1-2 drops of essential oil per 50mL of water)
- 4) Close the water tank cover and outer cover, and then switch on the power.



- 5) After the power is switched on, the product will turn on and light up for 2 seconds, indicating that it is in standby mode. Press the switch to turn on the humidification function.



- 6) Note: The product needs to be placed steadily on a flat surface. Do not shake or tilt the product to avoid overflowing of the liquid in the water tank and flooding of the product's electronic, which can result in the product malfunctioning.



5. When there is not enough water in the tank, the aroma diffuser and the LED light will automatically turn off.
6. Instructions for use

Switch	Spray	LED light
1st Press	Continuous spraying	Colorful gradient lights
2nd Press	Intermittent spraying (10 sec.)	Colorful gradient lights
3rd Press	Continuous spraying	power off
4th Press	Spray off	power off

7. How to clean the product:
 - a. Use wet cotton swabs to gently wipe the product; do not use corrosive cleaning products;
 - b. When cleaning the water tank, remove the remaining water from the water tank (Make sure the USB port is facing upwards to prevent the droplets from getting into the product, making the internal parts wet and affecting the normal use of the product.) Then wipe it carefully with a clean cotton cloth. The electronic parts must not come into contact with water.

CAUTION

1. Non-technical personnel are not allowed to maintain, dismantle and repair the product on their own. If you need your product to be repaired, please contact the sales office. It is not uncommon for internal parts of the product's top cover to fall off; users can assemble the parts back into place by themselves and continue using the product.
2. Avoid twisting or stretching the USB cable on the power adapter, do not place the USB cable in hot places, do not press the USB data cable with heavy objects, and do not use a clip to clamp or repair the USB cable.
3. A peculiar smell, noise or abnormal heating of the product mean that the product has malfunctioned. Stop using the product immediately.
4. To ensure cleanliness, the water in the water tank must be completely removed from the drain side after each use, and then wiped clean with a cloth. If aromatherapy oil is accidentally spilled, wipe it off with a cloth immediately. Do not aim the spray directly at furniture, clothes, walls, etc.
5. Do not move the product while it is in use. Do not touch the product with wet hands to avoid leakage. Do not place the product under the tap to add water.
6. Children under six should use this product under adult supervision.
7. Disconnect the power when filling water or cleaning de product and when it is not in use. Keep the product away from direct sunlight, air conditioners, fans, or places with high temperature.
8. Adding too much essential oil may damage the product.



innoGIO

Produced in China for INNOGIO sp. z o.o.
Ostródzka street 74H, 03-289 Warsaw, Poland
www.innogio.com

@innoGIO.official @innogio_com