

GIO-370

InnoGIO



GIOwarm

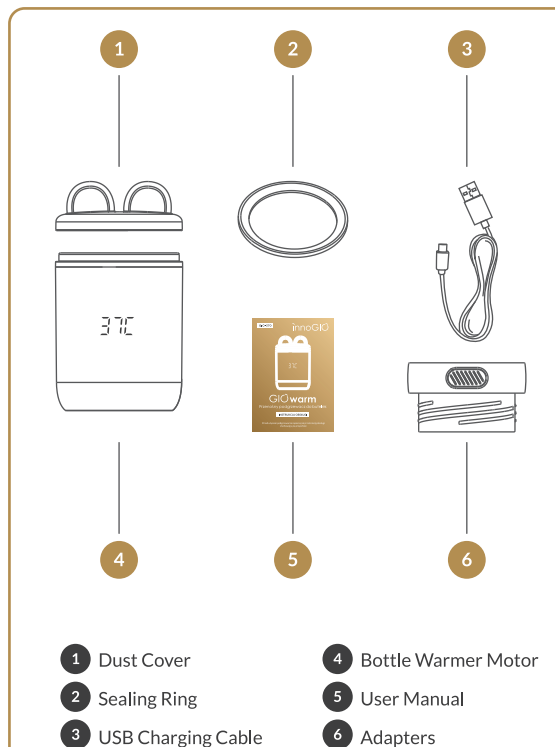
Portable Baby Bottle Warmer

USER MANUAL

Read this user manual before using your portable bottle warmer and keep the user manual for future reference.

Overview

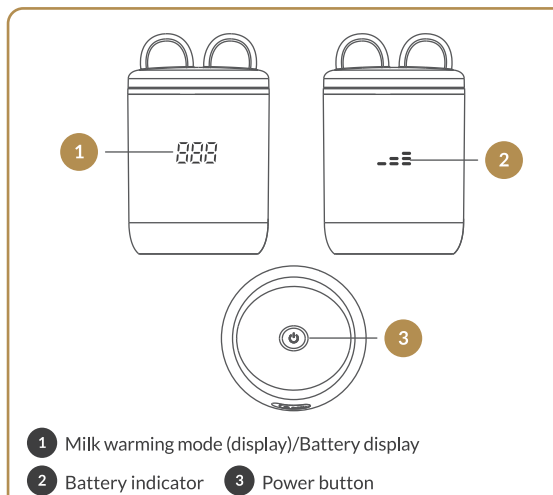
01



- | | |
|----------------------|-----------------------|
| 1 Dust Cover | 4 Bottle Warmer Motor |
| 2 Sealing Ring | 5 User Manual |
| 3 USB Charging Cable | 6 Adapters |

Description of the led display and button function

02



- 1 Milk warming mode (display)/Battery display
2 Battery indicator 3 Power button

TIPS:

This product has a built-in li-ion battery. When the battery level falls below 20%, the display will briefly show LO. We recommend that you use a certified PD fast charger to charge the bottle warmer motor as soon as possible.

What's in the box.

Dust Cover; Sealing Ring; USB Charging Cable; Bottle Warmer Motor; User Manual; Adapters.

Cleaning

03

Follow these rules when using the bottle warmer.

CAUTIONS

- Clean the bottle warmer before and after each use.
- Unplug the USB charging cable and press and hold for two seconds to shut the device down. Clean the stainless steel parts on the top of the motor of the bottle warmer and the waterproof sealing ring inside the stainless steel and allow them to dry.
- When cleaning the device you can wipe these parts clean with a clean soft cloth. Be careful not lose the waterproof sealing ring.
- When you have finished warming the milk, repeat the steps indicated above and clean the bottle warmer again.

Depending on the frequency of use, it is recommended to descale the bottle warmer every month or so to ensure its efficiency.

CAUTIONS

- Descal the bottle warmer with a mixture of white vinegar and cold water. Turn on the heating function and turn off the bottle warmer after 5 minutes. Leave the solution in the bottle warmer until all the limescale has dissolved.
- Thoroughly clean and dry the stainless steel bottle, dust cap, sealing ring and adapter.

Note: You can also use citric acid descaler. Do not use other types of descalers.

CAUTIONS FOR USE

04

- The product should be used under adult supervision. No parts of this product should be used as toys. When the device is not in use, keep the unused parts out of the reach of children.
- Check the condition of the product and clean it before each use.
- Working environment: Use this product in an environment of 10~35C.
- Do not use aggressive detergents or antibacterial cleaners to clean this product. High concentrations of detergents can cause plastic parts to crack. Once parts are cracked, replace them with new parts immediately.
- Wash your hands thoroughly and make sure that surfaces are clean before touching the disinfected components.
- When the device is not in use do not place it in direct sunlight, near a heat source or disinfection solution for a long time, otherwise it may reduce the service life of the product.
- Breast milk should not be heated for too long. After the product has been heated to the specified temperature, you can keep milk warm in this product, however it is recommended not to exceed half an hour, because the milk is easily perishable and after a time exceeding half an hour it is not good for the baby's health.
- When you have finished warming your milk with the portable bottle warmer, check whether the milk is the right temperature before feeding your baby. For example, you can pour a few drops of the warmed milk onto the back of your hand or the inside of your wrist.
- The heating times provided in this manual serves as reference values for heating times in specific conditions.

CAUTIONS FOR USE

05

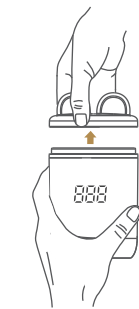
- The actual heating time is affected by multiple factors, such as ambient temperature, bottle material, baseline temperature, milk quantity, etc.
- Do not touch the metal stainless steel parts when using the portable bottle warmer to avoid burns.
 - It is recommended to match the product with an adapter that meets local safety requirements (input: 100-240V - 50/60Hz-0.45A Output: 5.0v2A) for use with local safety requirements.
 - This bottle warmer has a built-in li-ion rechargeable battery. Never use the product in an environment with strong static electricity or magnetic fields that could damage the battery installation protection device and cause a safety hazard.
 - Unplug the device when fully charged; prolonged charging may lead to fire and other safety incidents.

Assembly

06

To assemble the bottle warmer, follow the steps below.

1. To use the bottle warmer, first remove the bottle warmer dust cover.



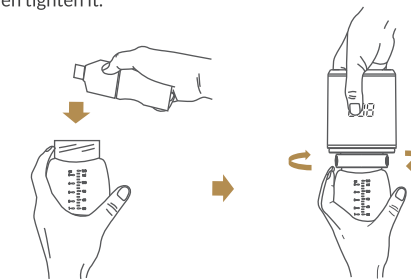
2. Install the L-shaped seal, align it with the groove of the bottle warmer and the bottle interface, install it downwards until it reaches the bottom.



3. When installing the adapter or feeding bottle, align the adapter and the feeding bottle with the groove of the bottle warmer and tighten; use moderate force to avoid damage to the bottle and the adapter.

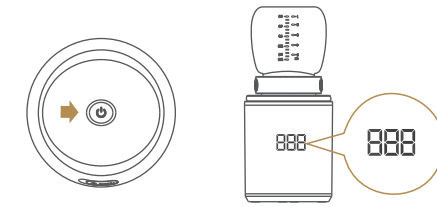


4. Fill the bottle with plain water or breast milk at room temperature, turn the body of the bottle warmer upside down, then tighten it.



5. Press and hold the power button "⏻" for 2 seconds 08

to turn on the bottle warmer, the buzzer will sound once and the default warming to 37°C will start. Continue to press and hold the button for 2 seconds, the buzzer will sound again for 1 second and °C will convert to °F display. The temperature is displayed in real time during heating.

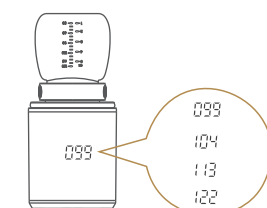
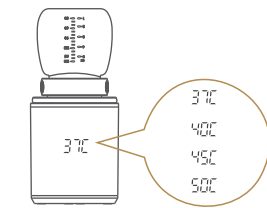


CAUTIONS:
This product has a built-in Li-ion battery. When the battery level falls below 20%, the display will briefly show LO. We recommend that you use a certified PD fast charger to charge the bottle warmer motor as soon as possible.

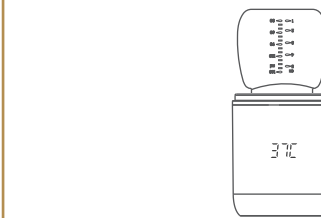
6. When the bottle warmer starts operating, the screen will display "37°C" when you select the Celsius milk warming mode. Short press the power button "⏻" to change the milk warming mode. There are four temperatures available (37°C/40°C/45°C/50°C). Select the temperature; the buzzer sounds once when pressed once and the heating temperature will be displayed in real time after 2 seconds. After the milk has been warmed, it enters the keep warm state. At this point the real time temperature display is displayed next to the temperature mode indication.

09

7. When the bottle warmer starts working, the screen will display "888" when you select the Fahrenheit milk warming mode. Short press the power button "⏻" to change the milk warming mode. There are four temperatures available (99°F/104°F/113°F/122°F). Choose the temperature as need; the buzzer sounds once when pressed once and the heating temperature will be displayed in real time after 2 seconds. After the milk has been warmed, it enters the keep warm state. At this point the real time temperature display is displayed next to the temperature mode indication.



8. The bottle warmer will automatically check the milk temperature after being turned on. When the temperature is ≤15°C, it switches to the thaw mode, the temperature is displayed in real time, thawing is completed when the temperature reaches 30°C and then it switches to 37°C. If the milk warming mode is selected during this process, the thawing mode is automatically stopped. 10



9. Short press the power button twice to turn on/off the night light. Night lights can be selected on demand.



10. When you have finished warming the milk, press and hold the power button "⏻" to turn off the bottle warmer.

LED battery level display 11

1. Press and hold the power button "⏻" when the device is switched off; the display screen will show the battery level percentage. The battery percentage has to be over 50% in order to use the device while charging.



2. When the power display falls below 20%, the display shows "LO" and after 2 seconds the device switches to display the current temperature. The power continues to decrease to the programmed value and the buzzer sounds 2 times. "LO" will automatically switch off after 6 seconds of flashing, charge the device without delay. The battery percentage has to be over 50% in order to turn on the device while charging.



3. When the device is being charged when it is turned off, the display presents the battery percentage in the form of flashing bars. 1 bar flashing/ 2 bars flashing/ 3 bars flashing, full 3 bars always on.

Universal milk bottle 12

No.	Brand
1	AVENT
2	Richell
3	CHU CHU
4	Combi
5	HiTo
6	UPIS
7	speCtra
8	DoubleHeart
9	Snow Bear

No.	Brand
10	Nip
11	chicco
12	Bebe confort
13	Lansinoh
14	bobo
15	Yo Yo Monkey
16	Piyopiyo
17	us baby
18	tutu

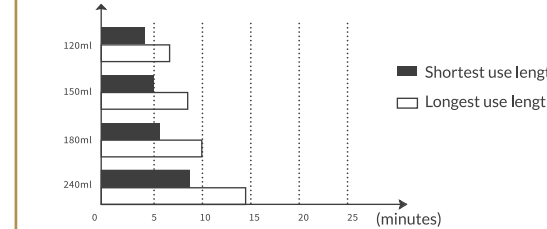
The use of sealing rings

As different brands of bottles have different shapes; we have designed a seal that can be used both forward and backward, the brand "sealing ring" in the table below has the U-shape facing upwards (the factory default is U-shape).

No.	Brand	Bottle material
1	AVENT	PA bottle/PP bottle
2	Lansinoh	PP bottle
3	CHU CHU	PP bottle
4	Combi	PP bottle
5	chicco	PPSU bottle/PP bottle
6	UPIS	PP bottle
7	speCtra	PPSU bottle/PP bottle
8	DoubleHeart	PPSU bottle/PP bottle
9	Snow Bear	PP bottle

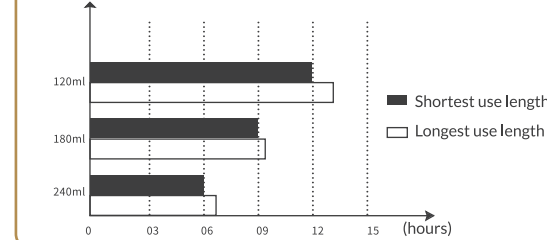
Heating time 13

Note: An external adapter (fast charger) is recommended when using this device at home. Total heating time reference information: The heating time may differ depending on the environment where the device is used. The following data are laboratory data of milk heated to 40°C intended for general reference only.



Heat preservation time

Heat can be maintained at 40°C for up to 12 hours when the device is fully charged. The heating time may differ depending on the environment where the device is used.



Troubleshooting 14

Can I use this product to keep water / milk warm all night?

- You can use this product to keep water warm overnight.
- You can use this product to keep milk warm overnight. However, for milk, less than half an hour is suggested., Milk is easily perishable after a time exceeding more than half an hour and it is not good for the baby's health.

What should I do if white spots appear inside the bottle warmer?

The white spots are limescale deposits which are hazardous to your baby's health. It is recommended to use pure or distilled water to heat liquids to avoid limescale from heating tap water. If limescale appears, add a small amount of white vinegar or citric acid descaling agent, turn on the heating function and turn it off after 5 minutes. Leave the solution in the bottle warmer until all the limescale has dissolved. Do not use other types of descaling agents.

What is the best water temperature for babies?

- 37°C-40°C for protein powder/probiotics.
- 40°C-45°C for milk powder and drinking water.

Why is it that the lower the ambient temperature, the longer the heating time?

Lower ambient temperature results in lower initial water temperature and that results in longer heating time.

Dry boil protection alarm 15

If the stainless-steel part is not filled with a bottle with breast milk or water, a dry boil alarm will be triggered. A long buzzer sounds for 1 second and the display will show 01.

Why is the dry boil alarm on when there is water in the bottle?

When adding hot water, it is best to wait for 10-30 seconds before turning on the device, so as to avoid the temperature difference between the water temperature and the device and, as a result, the dry boiling mode.

innogIO

INNOGIO sp. z o.o.
Ostródzka street 74H, 03-289 Warsaw, Poland

www.innogio.com

@innogIO.official @innogio_com

