

EN

GIO-252

innoGIO



GIÖsafety Smart Clock Camera

Family use seafy camera

USER MANUAL

1. What's included

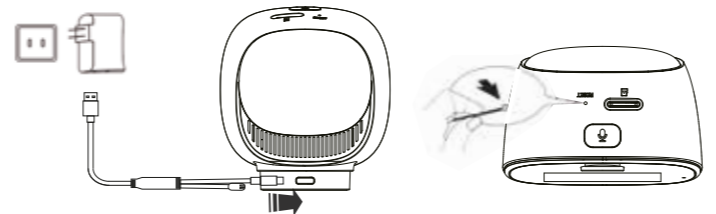
- ① 1. GIÖsafety Smart Clock Camera.
 - ② 2. Type-C charging and temperature cable
 - ③ 3. Reset pin
- *Note: micro SD card is not included

2. Parts of the Camera

-
- 1. Camera lens
 - 2. Screen (Clock, Time, Wi-Fi Status, Microphone Status, Temperature)
 - 3. Stand
 - 4. Microphone (Talk to the Smartphone app holder)
 - 5. Call-out button (Press once to call-out to Smartphone app holder)
 - 6. Reset button (Press and hold for 5 seconds with the reset pin to reset the camera)
 - 7. Micro SD card slot (Add 128GB or less micro SD card to enable recording: supports only microSD cards with FAT32 format)
 - 8. Night lamp (Control via app)
 - 9. Speaker (Sounds can be played from the app)
 - 10. Type-C power port (Input power: 5VDC, Max.1-1.5A)

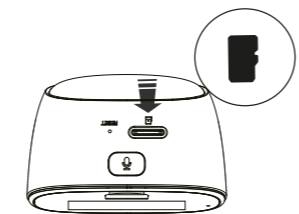
3. Initial Setup

Turning On the Camera



After connecting the power supply with the IP camera, you will hear 'camera start wait for connection'.
If the camera failed to connect, it needs to be reset.
To reset the IP camera, use the reset pin to press the "Reset" hole on the top of the camera. Press and hold until the camera starts moving automatically and you hear 'the restart succeeded'. It will take around 15 seconds.

Installing the Memory Card



Class 4 or higher Micro SD memory card required (up to 128GB) for standard use.



Preparations before use
Mobile device system requirements:
Android OS 5.0 or higher
iOS 8.0 or higher



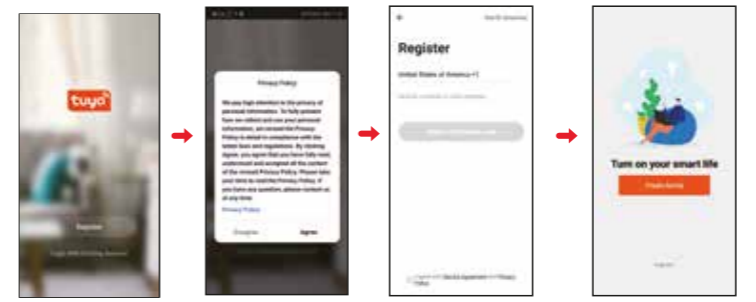
Install the App

Use your mobile phone or tablet to search for "TuyaSmart" in Google Play (for Android OS) or in the Apple app store (for iOS) to find the app, and install it in line with the instructions.



Create an account

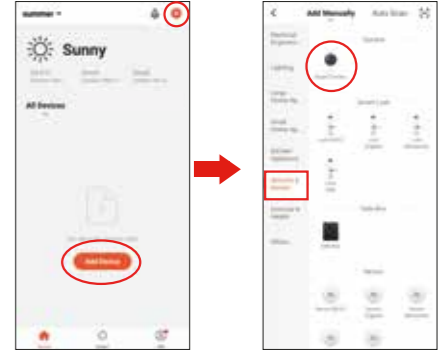
If this is your first time using the app, you need to create an account following the steps below:



4. Connecting Your IP Camera with the App

Note: Your IPC Camera is supported only by a 2.4GHz Wi-Fi network.
For setup, make sure your mobile device is connected to a 2.4GHz Wi-Fi network

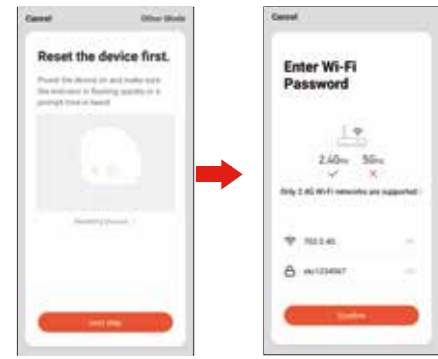
- After installing the 'Tuya Smart' app, open the app and follow the prompts to set up the app.



Then tap '+' or 'Add Device' from the home page.

- Turn on the device, you should hear 'camera start'.

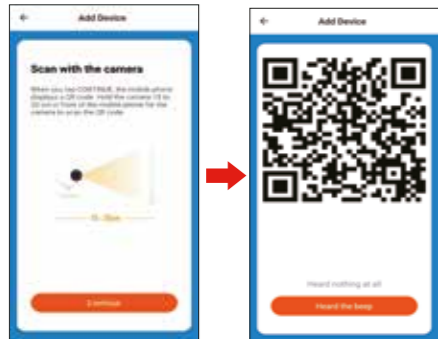
Make sure your smart device is connected to a 2.4G Wi-Fi network, then tap 'Confirm'.



3. The app will guide you to scan your mobile device using the camera.

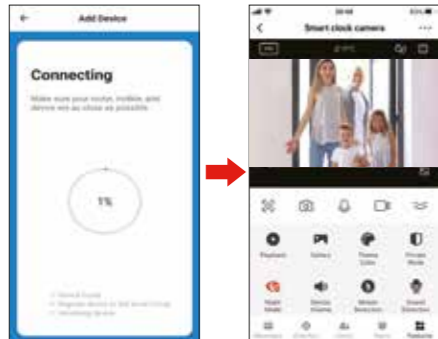
When you tap 'Continue', the mobile phone will display a QR code.

Hold the camera 15 to 20 cm in front of the mobile device for the camera to scan the QR code.



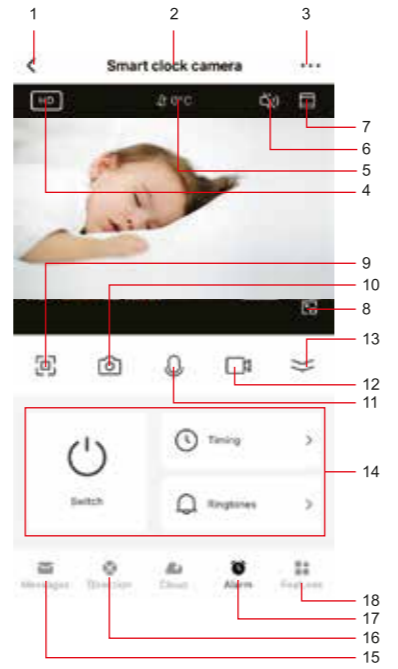
4. When connecting, make sure your router, mobile, and device are placed as close to each other as possible.

Once the camera receives the information from your mobile device, you should hear 'camera configured' which means the camera has connected successfully. Your camera's Live Camera view with a function to stream videos will be opened.



5. Using the Tuya Smart App

1. Back to app home page
2. Camera name (editable)
3. Camera settings
4. Current resolution (HD, SD)
5. Current temperature
6. Open to play sounds from the camera
7. Zoom in/Zoom out
8. Thumbnails floating on the screen
9. Full screen of the live view
10. Take a photo (photo screenshot)
11. Talk to the camera
12. Take a video (video recording)
13. Hide the menu
14. Area of available functions for clock (set timing and multiple ringtone selections)
15. Message center (motion/sound detection)
16. Direction (monitor the direction of the camera, available for horizontal 355°)
17. Clock (set up the clock function)
18. Features (all available features of the camera)



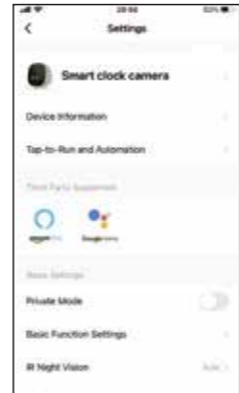
Playback of the Saved Files

- a. Choose the device, get into the live view, press the 'playback' icon (Only available when the micro SD card is inserted.)
- b. Users can access the videos recorded on the camera.
- c. Users can choose a specific date from which they want to review videos.



Camera Settings

- Device Name:** Users can modify the device name.
- Share Device:** Users can make the device available to trusted people.
- Device Information:** Users can view the device owner, IP address, device ID, etc.
- Use Echo:** Instructions on how to connect the device with Amazon Alexa.
- Basic Function Settings:** Indicator light on/off, Flip screen, time watermark, speech method for one/two way talk.
- Motion detection:** User can switch on/off the motion detection alarm and set the sensitivity of motion detection.
- Memory card settings:** Users can check the memory of the card and wipe the SD card memory.
- Value-added Service Purchase:** Cloud storage service for users. (Subscription fee will be charged for this function.)
- Feedback:** Users can submit requests or proposals to the service provider to optimize the service.
- Firmware Information:** To view the information of current and previous firmware version.



- Remove Device:**
 - a. When users want to change the internet connection, press 'Remove Device' and reset the camera to reconnect it with a new Wi-Fi network.
 - b. When users will no longer use the camera.

6. FAQs

PROBLEM	CORRECTIVE ACTION
Camera is not connecting to my Wi-Fi network	<ol style="list-style-type: none"> 1. Make sure the Wi-Fi signal is flashing. If the Wi-Fi signal is not flashing, you will need to press and hold the Reset button (see the Description section). 2. Make sure the Wi-Fi network is a 2.4GHz network, the device will not connect to a 5GHz network. 3. Test your Wi-Fi network on other devices such as your phone or computer to make sure it is working properly. 4. The Wi-Fi connection may be out of range during pairing. Use your phone to check the range; it is recommended to have at least 2 signal bars showing for proper connection. 5. Your Wi-Fi network password is case sensitive, make sure you are entering it correctly.
The camera is off-lin	<ol style="list-style-type: none"> 1. There could be a temporary issue with your internet connection (e.g., service disruption). Try again in a few minutes. 2. Make sure your Wi-Fi router is turned on. 3. The camera may not have power, make sure the wall switch and breaker is in the on position. 4. Make sure the camera is getting a good signal from your Wi-Fi router. Use your phone to check the range; it is recommended to have at least 2 signal bars showing for proper connection. 5. The camera may have been disconnected from your Wi-Fi network; press and hold the Reset button (see the Description section) until you hear an audible tone.
How to reset the camera to reenter pairing mode?	<ol style="list-style-type: none"> 1. Press and hold the Reset button located at the back of the camera (see Description section) until you hear an audible tone.
The camera is not recording	<ol style="list-style-type: none"> 1. Make sure Record Switch is turned on in APP, under SD Card Settings. This is located in the Settings menu on the upper right corner in the control panel.

The camera is not recording	<ol style="list-style-type: none"> 2. Make sure that the microSD card is installed correctly. To confirm the camera is recognizing the microSD card, go to the SD card Settings in the Settings menu and make sure the microSD Card capacity displays Total capacity, Used and Free space. If this does not appear you may consider reformatting the microSD card. 3. WARNING: Reformatting the microSD card will delete all videos stored on the card. Go through the troubleshooting section before doing so.
-----------------------------	---

How do I set the camera to Event or Continuous Recording?	<ol style="list-style-type: none"> 1. Make sure the Record Switch is Turned on in the Settings menu under SD card settings and then select Event Recording or Continuous Recording.
---	--

How do I check the available space on the SD card?	<ol style="list-style-type: none"> 1. You will see Used Space and Free Space in the Settings menu under SD settings. 2. Note: The camera only supports 128GB or less microSD cards with FAT32 format.
--	---

What happens when the micro SD card reaches full capacity?	<ol style="list-style-type: none"> 1. If the microSD card reaches its full capacity, new videos will start recording(deleting) over the oldest videos.
--	---

Can I use a new microSD card if I do not want to record over existing videos?	<ol style="list-style-type: none"> 1. Yes, you can use a new microSD card if you do not want to record over existing videos; to do so, remove the side cover of the camera and replace the existing microSD card with a new one; it should not exceed 128GB. Once this is completed you will need to format the microSD card by going to the SD card settings in the Settings menu and pressing Format SD Card and then Confirm. 2. WARNING: Reformatting the microSD card will delete all content stored on the card."
---	---