

GIO warm Mini

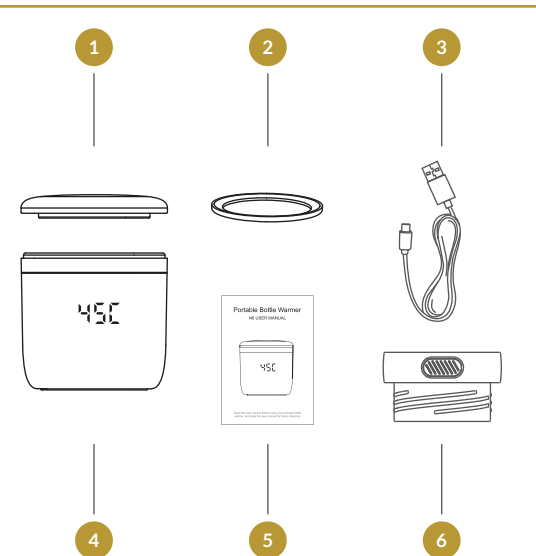
Portable Bottle Warmer

USER MANUAL

Read this user manual before using your portable bottle warmer and keep the user manual for future reference.

Overview

01

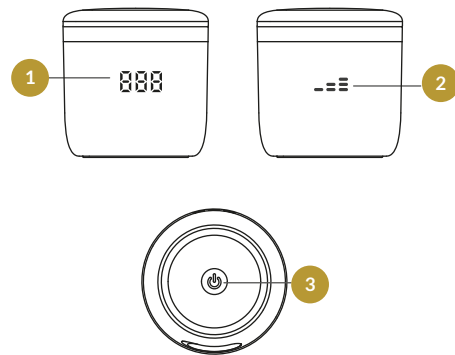


Parts list:

- | | |
|----------------------|-----------------------|
| 1 Dust Cover | 4 Bottle Warmer Motor |
| 2 Sealing Ring | 5 User Manual |
| 3 USB Charging Cable | 6 Adapters |

Description of the led display and button function

02



- 1 Temperature mode (display) / Battery display
- 2 Battery indicator
- 3 Power button

TIPS

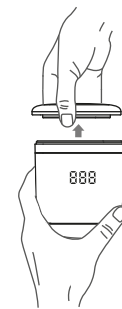
This product has a built-in Li-Ion battery. When the battery level drops below 20% the display will briefly show LO. We recommend that you use a certified PD fast charger to charge the bottle warmer motor as soon as possible.

Assembly

03

Follow the steps below to assemble the bottle warmer.

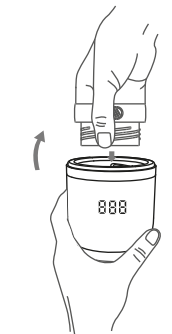
1. To use the bottle warmer, first remove the dust cover



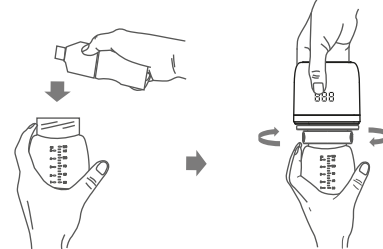
2. Install the L-shaped seal, align it with the groove of the bottle warmer and the bottle interface, install it downwards until it reaches the bottom



3. When installing the adapter or feeding bottle, align the adapter and the feeding bottle with the groove of the bottle warmer and the feeding bottle interface, and tighten using moderate force to avoid damaging the bottle and the adapter.



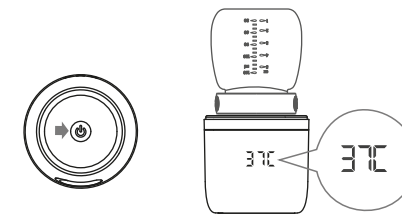
4. Fill the bottle with plain water or breast milk at room temperature, turn the body of the bottle warmer upside down, then tighten it.



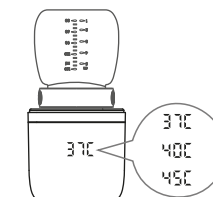
Usage

05

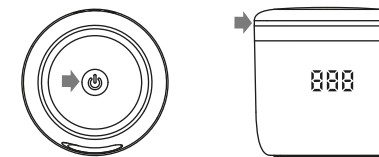
1. Press and hold the power button "⏻" for 2 seconds to turn on the bottle warmer, the buzzer will sound once and the default warming to 37°C will start. Display will flash and after 2 seconds, the heating will start, then the display will stop flashing and show the heating temperature.



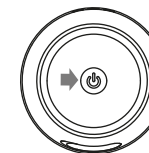
2. When the bottle warmer starts operating, short press the power button "⏻" to switch the milk warming mode. There are three temperature ranges in this mode (37°C/40°C/45°C). Select the temperature; the buzzer sounds once when pressed once. After the milk has been warmed, the device enters the keep warm mode. At this point, the display will show the real-time temperature



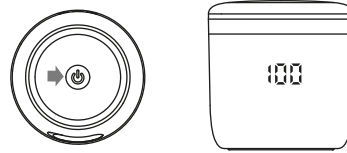
3. Short press the power button twice to turn on/off the night light. Night lights can be selected on demand.



4. Once the milk has been warmed, long press the power button "⏻" to turn off the bottle warmer.



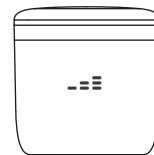
- Short press the power button "⏻" when the device is switched off; the display will show the battery level percentage.



- When the percentage drops below 20%, the display shows "LO" and after 2 seconds the device switches to display the current temperature. The power continues to decrease to the programmed value and the buzzer will sound 2 times. "LO" will automatically switch off after flashing for 6 seconds. Charge the device in time.



- When the device is being charged while it is turned off, the display presents the battery percentage in the form of flashing bars. 1 bar flashing/ 2 bars flashing/ 3 bars flashing, full 3 bars always on.



No.	Brand	No.	Brand
1	AVENT	1	Nip
2	Richell	2	chicco
3	CHU CHU	3	Bebe confort
4	Combi	4	Lansinoh
5	HiTo	5	bobo
6	UPIS	6	Yo Yo Monkey
7	speCtra	7	Piyopiyo
8	DoubleHeart	8	us baby
9	Snow Bear	9	tutu

THE USE OF SEALING RINGS

As different brands of bottles have different shapes, we have designed a seal that can be used both forward and backward, the brand "sealing ring" in the table below has the U-shape facing upwards (the factory default is U-shape).

No.	Brand	No.	Bottle material
1	AVENT	1	PA bottle/PP bottle
2	Richell	2	PP bottle
3	CHU CHU	3	PP bottle
4	Combi	4	PP bottle
5	HiTo	5	PPSU bottle/PP bottle
6	UPIS	6	PP bottle
7	speCtra	7	PPSU bottle/PP bottle
8	DoubleHeart	8	PPSU bottle/PP bottle
9	Snow Bear	9	PP bottle

Follow these rules when using the bottle warmer.

CAUTIONS !

- Clean the bottle warmer before and after each use.
- Unplug the USB charging cable, press and hold for two seconds to switch off the device. Clean the stainless steel parts on the top of the motor of the bottle warmer and the waterproof sealing ring inside the stainless steel and leave them to dry.
- When cleaning the device, you can wipe these parts clean with a clean soft cloth.
- Be careful not to lose the waterproof sealing ring.
- Once the milk has been warmed, repeat the steps indicated above and clean the bottle warmer again.

Depending on the frequency of use, it is recommended to descale the bottle warmer every month or so to ensure its efficiency.

CAUTIONS !

- Descal the bottle warmer with a mixture of white vinegar and cold water. Turn on the heating function and turn off the bottle warmer after 5 minutes. Leave the solution in the bottle warmer until all the limescale has dissolved.
- Thoroughly clean and dry the stainless steel bottle, dust cover, sealing ring and adapter.

Note: You can also use citric acid descaler. Do not use other types of descaler.

Follow these rules when using the bottle warmer. !

- The device is intended for use by adults. No parts of this device should be used as toys. When the device is not in use, keep the unused parts out of the reach of children.
- Check the condition of the product and clean it before each use.
- Do not use harsh detergents or antibacterial cleaners to clean this device. High concentrations of detergents can cause plastic parts to crack.
- Once parts are cracked, replace them with new parts immediately.
- Wash your hands thoroughly and make sure that all surfaces are clean before touching the disinfected components.
- When the device is not in use, do not place it in direct sunlight, near a heat source or disinfection solution for a long time, otherwise it may reduce the service life of the product.
- Breast milk should not be heated for too long. After warming the milk to the desired temperature, you can keep your breast milk warm using this device, however it is recommended not to exceed half an hour, because the milk is easily perishable and after a time exceeding half an hour it is not good for the baby's health.
- Once the milk has been warmed, check whether the milk is the right temperature before feeding your baby. For example, you can pour a few drops of the warmed milk onto the back of your hand or the inside of your wrist.
- The heating times provided in this user manual are reference values for heating times in specific conditions. The actual heating time is affected by multiple factors, such as ambient temperature, bottle material, baseline temperature, milk quantity, etc.

- Do not touch the metal stainless steel parts when using the portable bottle warmer to avoid burns.
- It is recommended to match the device with an adapter that meets local safety requirements (input: 100-240V - 50/60Hz-0.45A Output: 5.0v3A).
- This bottle warmer has a built-in Li-Ion rechargeable battery. Never use the device in an environment with strong static electricity or magnetic fields that could damage the battery installation protection device and cause a safety hazard.
- Unplug the device when it is fully charged, prolonged charging may lead to fire and other safety incidents.

Can I use this product to keep water/milk warm all night?

- You can use this product to keep water warm overnight.
- You can use this product to keep milk warm overnight. However, for milk, less than half an hour is suggested. Milk is easily perishable after a time exceeding more than half an hour and it is not good for the baby's health.

What should I do if white spots appears inside the bottle warmer?

The white spots are limescale deposits, which are hazardous to your baby's health. It is recommended to use pure or distilled water to heat liquids to avoid limescale from heating tap water. If limescale appears, add a small amount of white vinegar or citric acid descaling agent, turn on the heating function and turn it off after 5 minutes. Leave the solution in the bottle warmer until all the limescale has dissolved. Do not use other types of descaling agents.

What is the best water temperature for babies?

- 37°C-40°C for protein powder/probiotics.
- 40°C-45°C for milk formula and drinking water.

How come the lower the ambient temperature, the longer the heating time?

Lower ambient temperature results in lower the initial water temperature, and that results in longer heating time.

Dry boil protection alarm

If the stainless steel part is not filled with a bottle with breast milk or water, a dry boil alarm will be triggered. A long buzzer sounds 3 times and the display will show "001".

NTC fault performance:

When the device is turned on to start warming, a NTC fault might be detected. A buzzer will then sound 3 times, the device will be unable to shut down or heat, the display will show "002".

Why is the dry boil alarm activated when there is water in the bottle?

When adding hot water, it is best to wait for 10-30 seconds before turning on the device, so as to avoid the temperature difference between the water temperature and the device and, as a result, the dry boiling mode.

innogio

Manufactured in China for **INNOGIO** sp. z o.o.
Ostródzka street 74H, 03-289 Warsaw, Poland

www.innogio.com

 @innogio.official  @innogio_com

